



STEVE
FINEBERG & ASSOCIATES
 COMMERCIAL REAL ESTATE

1400 S.E. WALTON • SUITE 40 BENTONVILLE, ARKANSAS 72712 479.271.4161

Listed by:
ETHAN TISDALE
 (479) 225-0056
 ethan@arkrealestate.com

MULTI-USE BUILDING



6279 W WEDINGTON DR - FAYETTEVILLE, AR

Lease Summary

Monthly Price:	\$8,333
Size:	10,000 SF
Price per SF:	\$10
Lease type:	MG

LARGE OPEN SPACE WITH MULTIPLE OFFICES

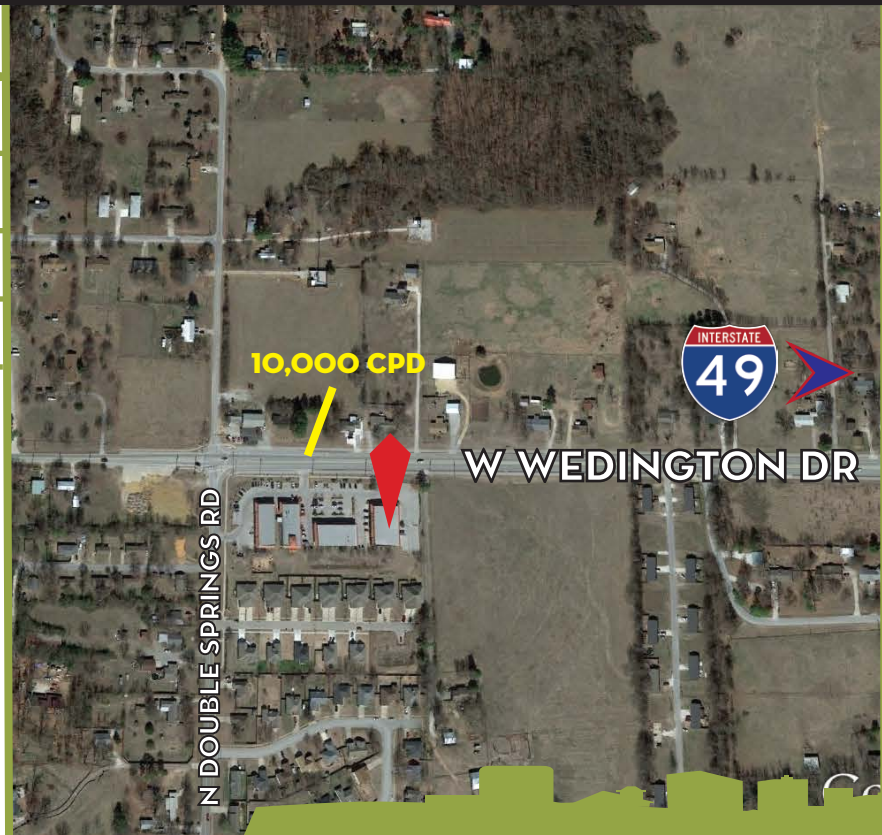
CATERING KITCHEN

FAST GROWING AREA ON WEDINGTON CORRIDOR

EASY I-49 ACCESS

AMPLE PARKING ON FRONT AND SIDES

POSSIBLE USES INCLUDE OFFICE SPACE, EVENT CENTER, CHURCH, AND MANY MORE



Listed by: **ETHAN TISDALE • (479) 225-0056 • ETHAN@ARKREALESTATE.COM**

FOR MORE INFORMATION ON THIS PROPERTY OR TO SEE OUR OTHER PROPERTIES VISIT: WWW.ARKREALESTATE.COM