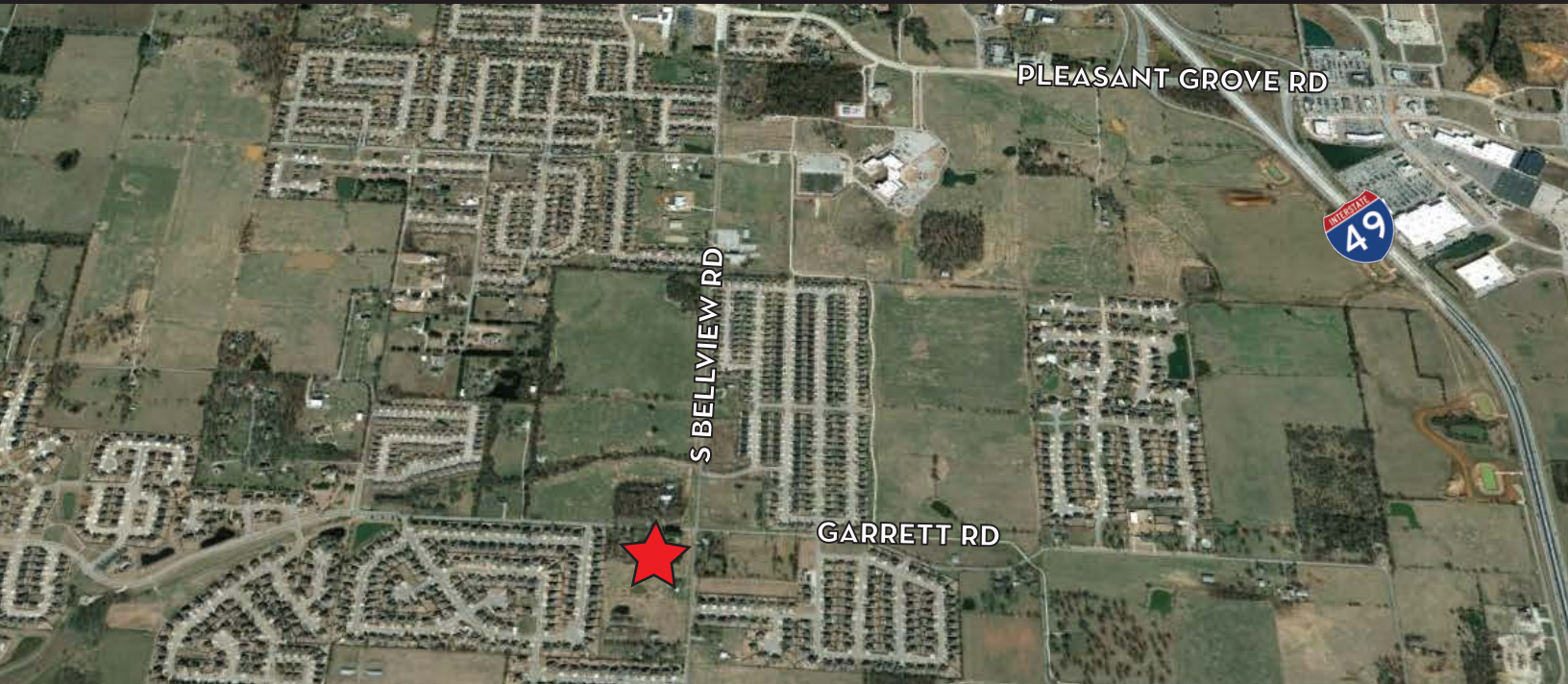




STEVE  
**FINEBERG** & ASSOCIATES  
COMMERCIAL REAL ESTATE

1400 S.E. WALTON • SUITE 40 BENTONVILLE, ARKANSAS 72712 479.271.4161

Listed by:  
**STEVE FINEBERG**  
(479) 409-4756  
steve@arkrealestate.com



## 2.49 ACRES GARRETT RD - ROGERS, AR

### Property Summary

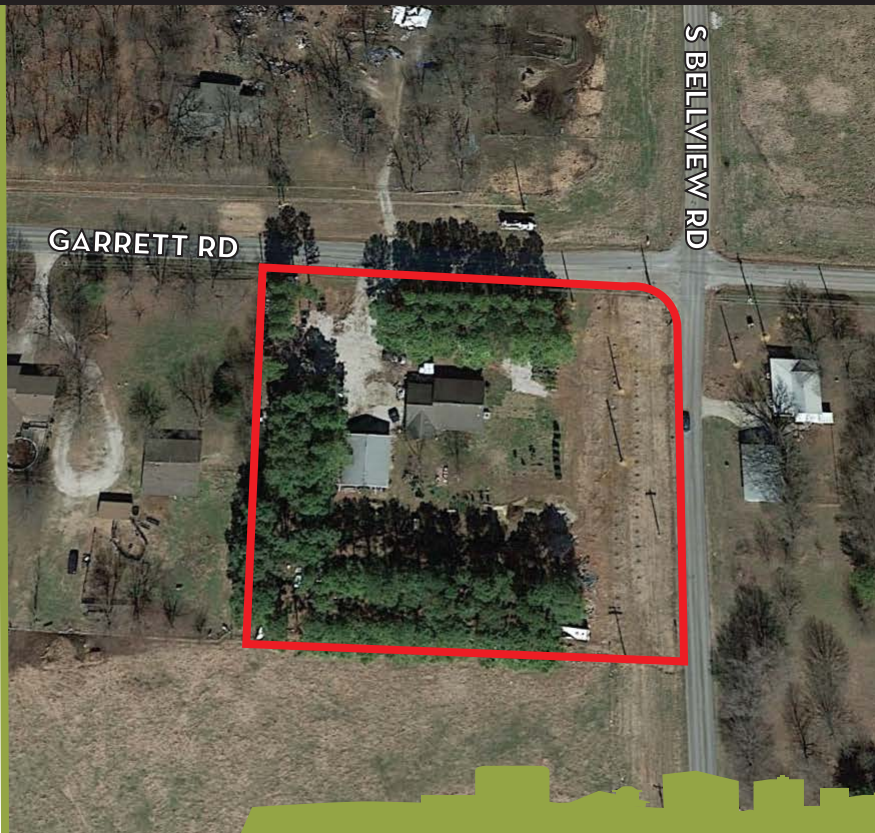
Price: \$650,800

Size: 2.49 Acres

\$ per Acre: \$261,365

Zoned: C-3

- Great commercial site
- Water across the street
- Bellview Rd expanded
- Easy I-49 access
- Fast growing area



Listed by: **STEVE FINEBERG • (479) 409-4756 • STEVE@ARKREALESTATE.COM**

FOR MORE INFORMATION ON THIS PROPERTY OR TO SEE OUR OTHER PROPERTIES VISIT: [WWW.ARKREALESTATE.COM](http://WWW.ARKREALESTATE.COM)



STEVE  
**FINEBERG** & ASSOCIATES  
COMMERCIAL REAL ESTATE

1400 S.E. WALTON • SUITE 40 BENTONVILLE, ARKANSAS 72712 479.271.4161

Listed by:  
**STEVE FINEBERG**  
(479)409-4756  
steve@arkrealestate.com

## UTILITY MAP



### LEGEND



Water Line



Sewer Line



Manhole

Listed by: **STEVE FINEBERG • (479) 409-4756 • STEVE@ARKREALESTATE.COM**

**FOR MORE INFORMATION ON THIS PROPERTY OR TO SEE OUR OTHER PROPERTIES VISIT: WWW.ARKREALESTATE.COM**